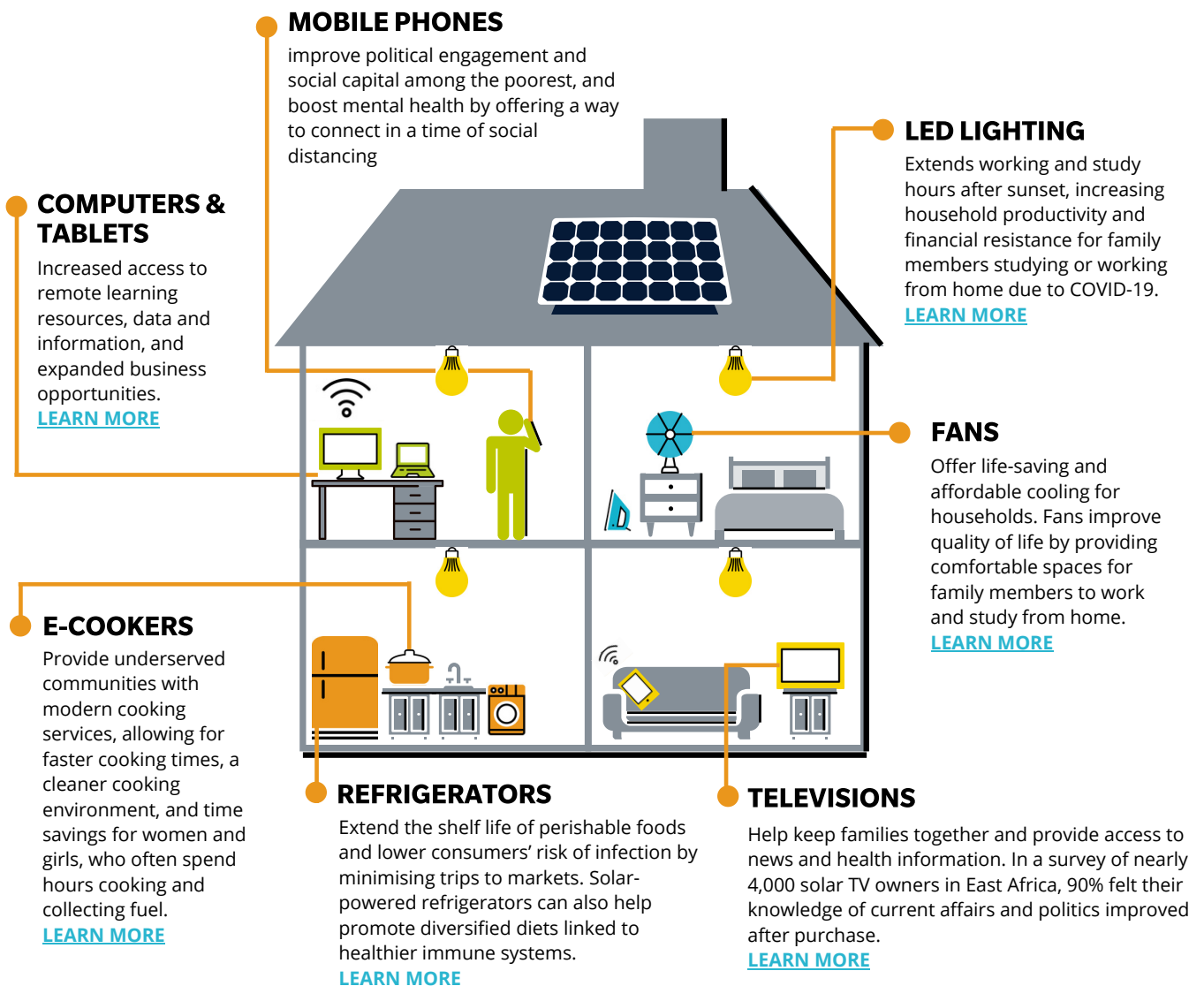


# APPLIANCES ARE ESSENTIAL TO A ROBUST PANDEMIC RESPONSE

Communities without reliable access to electricity are disproportionately affected by the COVID-19 pandemic. Solar energy systems and compatible appliances provide communities and healthcare facilities with the electricity and tools they need to shelter at home safely, access critical information about the virus, maintain a steady source of income, and treat COVID-19 effectively. Access to a wide array of appliances and equipment is therefore vital to both ensuring a swift and equitable recovery, and creating the conditions for greater community resilience to future emergencies.

## AT HOME



# AT WORK

## AGRICULTURAL TECHNOLOGIES

Distributed solar-powered agro-processing facilities reduce crowd size at community mills, save time, and reduce manual labour. Egg incubators and milking machines enable farmers to increase production, resulting in better financial outcomes.

[LEARN MORE](#)

## SOLAR WATER PUMPS

Can lead to an increase in yields of as much as two to three times. 82% of solar water pump customers in East Africa experienced quality of life improvements, mainly through increased income, better yields, and greater savings.

[LEARN MORE](#)

## MOBILE PHONES

Enable business transactions from afar. A survey of Kenyan farmers found cell phones help them sell products, coordinate with other farmers and purchase inputs for their farm when travel is restricted.

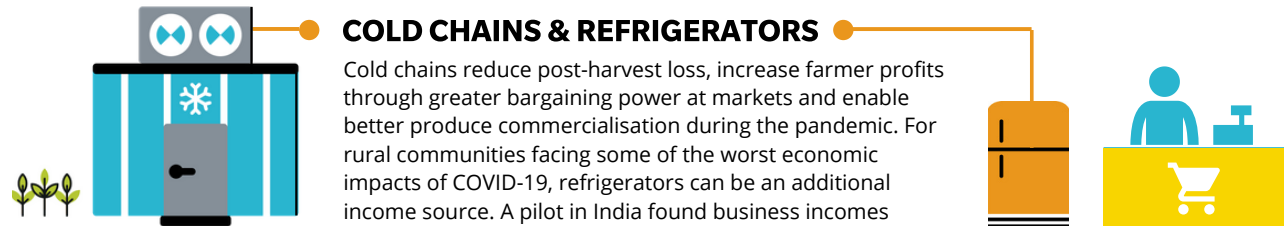
[LEARN MORE](#)



## COLD CHAINS & REFRIGERATORS

Cold chains reduce post-harvest loss, increase farmer profits through greater bargaining power at markets and enable better produce commercialisation during the pandemic. For rural communities facing some of the worst economic impacts of COVID-19, refrigerators can be an additional income source. A pilot in India found business incomes increased by US\$57/month on average with a refrigerator.

[LEARN MORE](#)



# AT HEALTHCARE FACILITIES

## FANS

Maintain healthy indoor air quality and help prevent airborne infections in medical facilities through improved airflow.

[LEARN MORE](#)

## LED LIGHTING WITH BATTERY BACKUP

The vast majority of COVID-19 diagnostic tests require electricity. Backup and lighting provide clinics with reliable power and extend operating hours.

[LEARN MORE](#)

## PATIENT MONITORS

Patient monitors, particularly pulse oximeters, are critical to monitoring patients for COVID-19 symptoms and tracking the blood oxygen levels of infected patients.

[LEARN MORE](#)

## SOLAR WATER PUMPS

Provide reliable water supply for clinical procedures, ensure proper hydration, and facilitate basic hygienic practices.

[LEARN MORE](#)

## COMPUTERS & ICT EQUIPMENT

Enable clinic staff to track cases, update patient records and contribute to national reporting efforts.

[LEARN MORE](#)

## RESPIRATION EQUIPMENT

Enables ventilation and support for patients unable to breathe on their own. Respiration therapies are critical in COVID-19 treatment.

[LEARN MORE](#)

## VACCINE REFRIGERATORS

Store COVID-19 vaccines and other essential medical products at a stable temperature to prevent degradation.

[LEARN MORE](#)

## STERILISERS

Destroy all microorganisms on the surface of medical equipment and tools to prevent disease transmission.

[LEARN MORE](#)

